

## Specification of HD-A40 Control Card

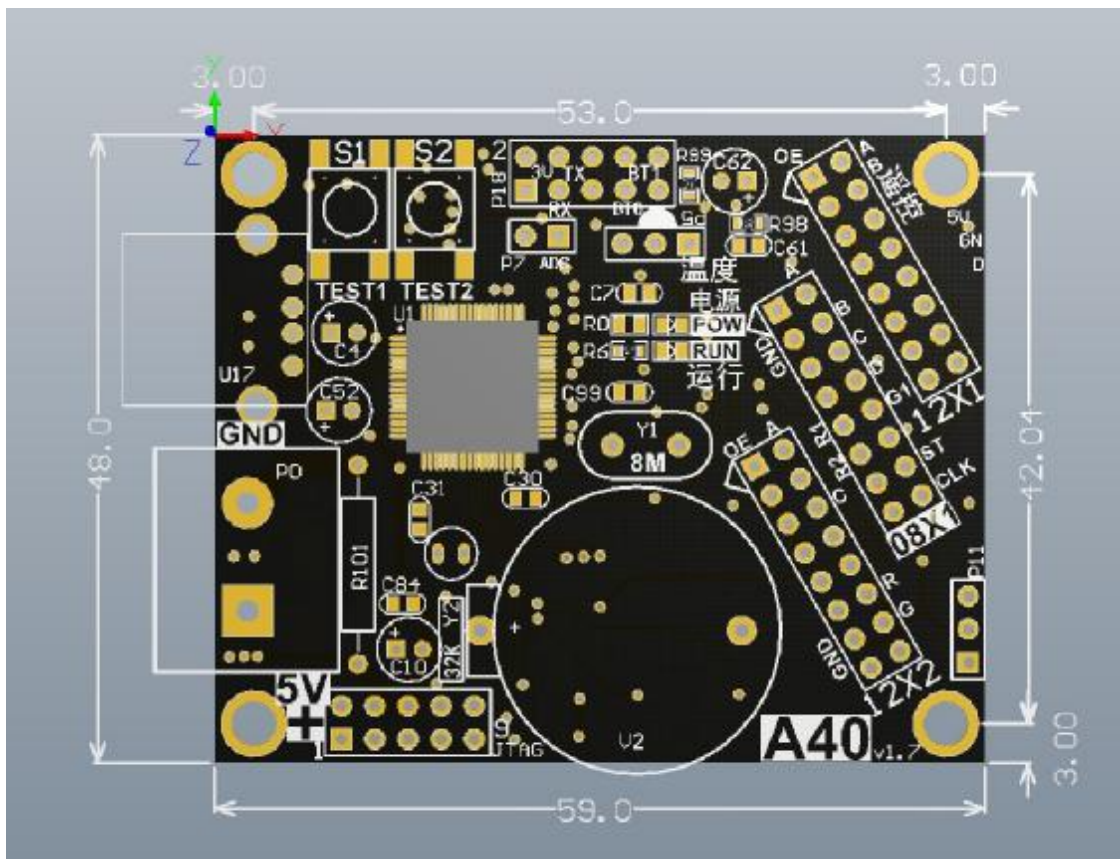
Version: HD-A40 V1.7

**Application Range:** This product applies to information displays for all the signs, stores, vehicles, outdoor ads, etc..

**Advantages:** Wireless transmission for U-Disk, cost-effective, simple software interface, easy to operate, rich and fine display effects; above all, more than 98% single color and double-color screens are supported.

**Application Software:** the fourth-generation operating software HD2014 for screen of Huidu Technology Co., LTD

### I. Setup Diagram





## II. Parameters Description

Types of control card: Single color/double-color

Control range: 32\*768 and 16\*1024 for single color; 32\*384 and 16\*768 for double-color;

Scan modes: Static, 1/2, 1/4, 1/8 and 1/16 common modes

Communication type: U-Disk

Power supply: +4.2—5.5V

Power consumption:  $\leq 0.5W$

Work environment: -40℃--75℃

Installation dimension: 48.0 (H) \*59.0 (W) (mm)

## III. Features

Content	Capability
FLSH capacity	2M Byte (able to expand to 8M Byte)
Communication port	U-Disk
Color	Double-color supports red, green and yellow.
Program quantity	Two hundred programs are available, which can be switched by buttons or remote control.
Area quantity	Eight areas with separate zone, special effect and border
LED pixel	32(H)×768(W) (The resolution is 24K.)
Display contents	Text, image, time, temperature, count, animated characters, etc.
Display modes	Display in order, switch by buttons or remote control
Display effects	1. Text, image, time, count, temperature (Module is required to be connected.), etc.; 2. Support the settings of program/area/custom borders; 3. Various action modes; 4. Over 40 special character effects; 5. Support simple animated characters;

	6. Support hollow/stroked characters; 7. Support the background settings of area characters;
Function of clock	1. Support calendar/analog clock; 2. Clockwise/counter-clockwise count; 3. The font, size, color and position can be set freely; 4. Support multiple time zones;
Expanders	Temperature/humidity/remote control/light sensors
Automatic switch screen	Support time switch
Luminance control	Support three luminance modes

#### IV. Port Definition

The control board has a common 08 port and two common 12 ports, which are defined as below:

the 08 port

1	GND	LA	2
3	GND	LB	4
5	GND	LC	6
7	EN	LD	8
9	R1	G1	10
11	R2	G2	12
13	GND	STB	14
15	GND	SCK	16

the 12 port

1	OE	A	2
3	GND	B	4
5	GND	C	6
7	GND	CLK	8
9	GND	STB	10
11	GND	R	12
13	GND	G	14
15	GND	D	16